



5/08/2012

SLAM-IT PRO[®] RIM MODEL #5000

ASSEMBLY INSTRUCTIONS AND OWNER'S MANUAL

REGISTER YOUR PRODUCT ONLINE AT WWW.LIFETIME.COM

At Lifetime, we are committed to providing innovative and quality products. While registering, you will have the opportunity to give us your feedback. Your input is valuable to us.

- You can also opt in to receive new product notifications or promotions.
- In the unlikely event of a product recall or safety modification, your registration provides the information we need to notify you directly.
- Registration is fast, easy, and completely voluntary.

Lifetime's Promise to You:

Maintaining your privacy is our long-standing policy at Lifetime. And you can rest assured that Lifetime will not sell or provide your personal data to other third parties, or allow them to use your personal data for their own purposes.

We invite you to read our privacy policy at www.lifetime.com

REGISTER today!

****U.S. and Canada customers ONLY****

IF ASSISTANCE IS NEEDED,

DO NOT CONTACT THE STORE!!!

CALL OUR CUSTOMER SERVICE DEPARTMENT at **1 (800) 225-3865**

HOURS: 7:00 a.m. to 5:00 p.m. Monday through Friday, 7:00 a.m. to 12 noon Saturday (Mountain Standard Time)

****For customers outside the U.S. or Canada, please contact the store for assistance.****



WARNING



To ensure your safety, do not attempt to assemble the system without reading and following all instructions carefully. Identify and inventory the parts using the Parts List on Page 2.

Tools and Materials
Required for Assembly
(Not Included)

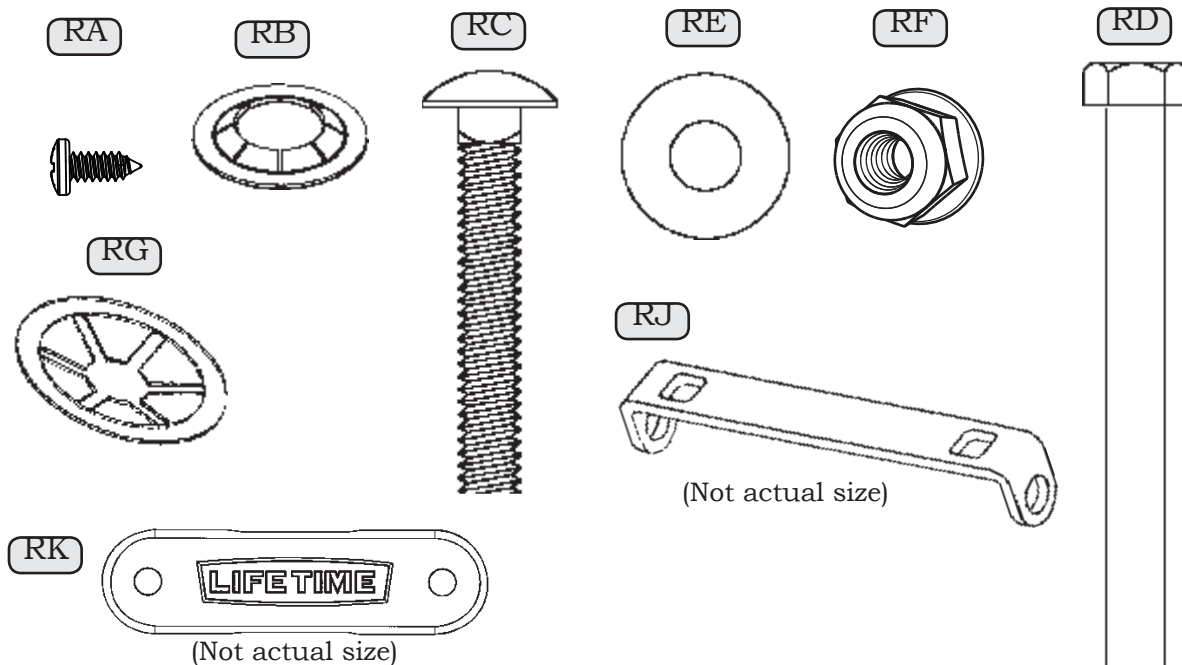
1. Adjustable Wrench
2. 1/2" Wrench
3. Phillips Screwdriver

PARTS LIST

ID	Part #	Description	Qty	✓
AA	502005	Net	1	<input type="checkbox"/>
AB	502056	Plastic Guard	1	<input type="checkbox"/>
AC	800165	Rim Cover Plate	1	<input type="checkbox"/>
AD	825619	Rim	1	<input type="checkbox"/>
Rim Hardware (HD9132E)				
RA	BS01000	3/8" Phillips Screw	4	<input type="checkbox"/>
RB	300104	3/8" Push Nut	2	<input type="checkbox"/>
RC	300106	5/16" x 2" Carriage Bolt	2	<input type="checkbox"/>
RD	302058	5/16" x 5 1/2" Hex Bolt	2	<input type="checkbox"/>
RE	302014	5/16" Flat Washer	2	<input type="checkbox"/>
RF	302090	5/16" Flange Nylock Nut	4	<input type="checkbox"/>
RG	300114	5/16" Push Nut	2	<input type="checkbox"/>
RH	502060	Compression Spring	2	<input type="checkbox"/>
RI	510038	3/8" x 5 1/2" Axle	1	<input type="checkbox"/>
RJ	804018	Pivot Bracket	1	<input type="checkbox"/>
RK	804033	Spring Retainer Plate	1	<input type="checkbox"/>

HARDWARE IS ACTUAL SIZE

(Unless otherwise indicated)



STOP!

BEFORE BEGINNING ASSEMBLY

STOP!

- Identify and inventory all parts using the checklist boxes on the Parts List. If any parts are missing, call our Customer Service Department.
- Test fit all Bolts by inserting them into their respective holes. If necessary, carefully scrape away any excess powder coating buildup from inside the holes. Do not scrape away all of the powder coating. Bare metal may rust.



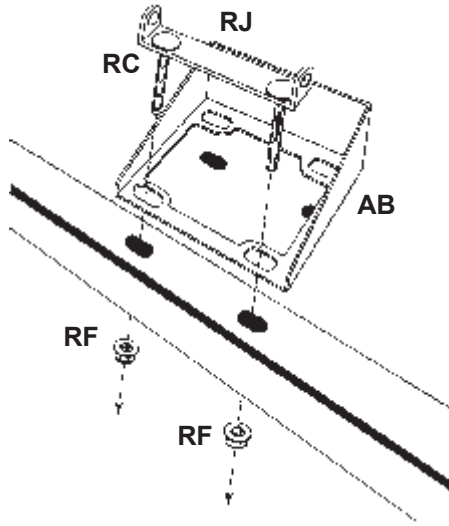
SAFETY INSTRUCTIONS



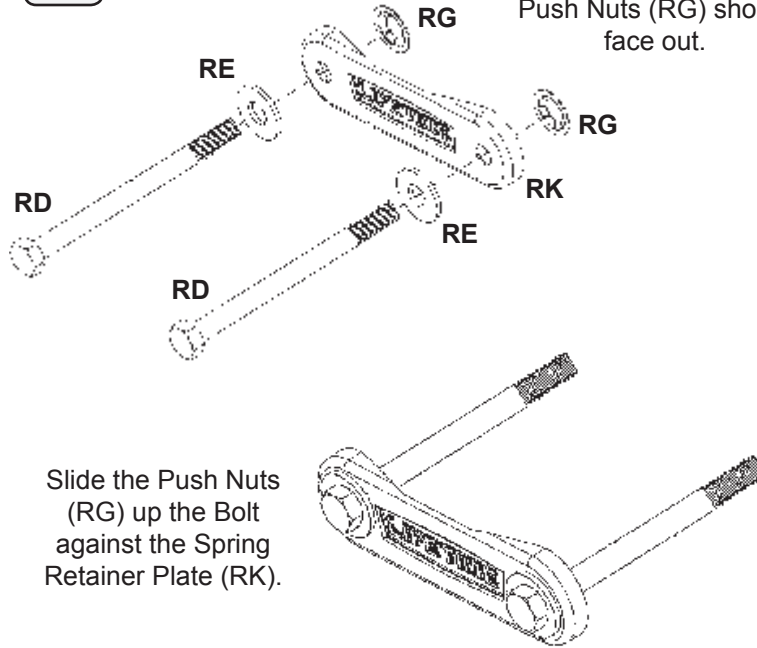
Failure to follow these safety instructions may result in serious injury or property damage and will void the warranty. *The owner must ensure that all players know and follow these rules for safe operation of the system.* Proper and complete assembly, use and supervision is essential for proper operation and to reduce the risk of accident or injury. A high probability of serious injury exists if this system is not installed, maintained, or operated properly.

- If using a ladder during assembly, use extreme caution. Follow all warnings and cautions on the ladder carefully.
 - 2 people are required for assembly.
 - Climate, corrosion, or misuse could result in system failure.
 - If technical assistance is required, contact the manufacturer.
- Most injuries are caused by misuse and/or failure to follow instructions. Use caution when using the system.*

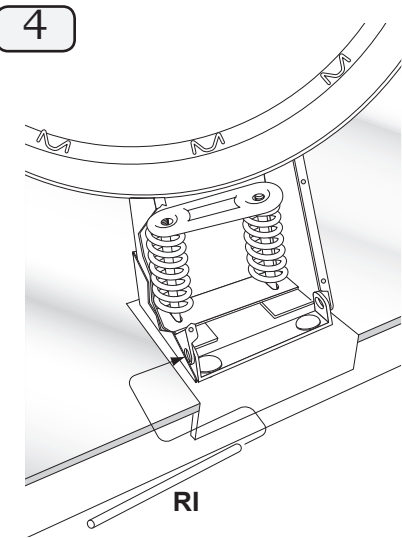
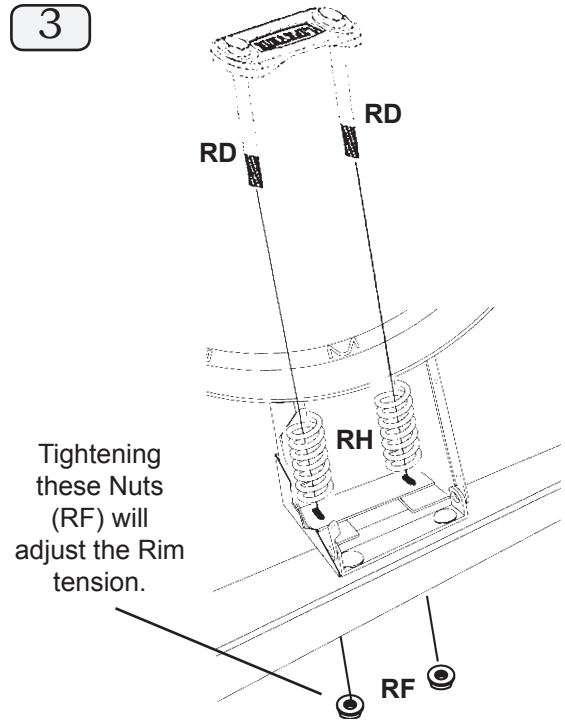
1 Insert the Carriage Bolts (RC) through the Pivot Bracket (RJ), Plastic Guard (AB) and the Backboard (Backboard not included).



2 The convex side of the Push Nuts (RG) should face out.



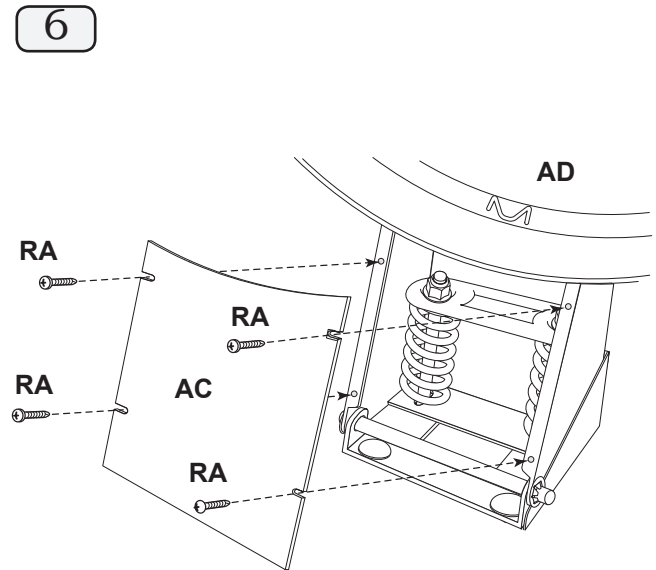
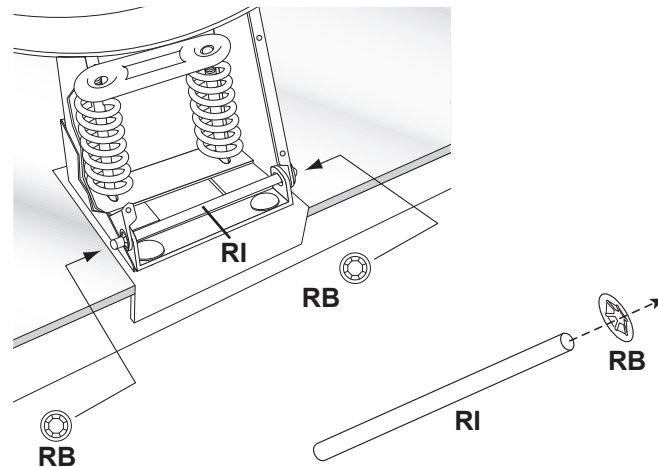
Slide the Push Nuts (RG) up the Bolt against the Spring Retainer Plate (RK).



Slide the Axle (RI) through the lower Rim holes and the Pivot Bracket. Make sure the Axle is centered.

5 The convex side of the Push Nuts (RB) should face out.

It may help to use a socket head to push the Push Nuts onto the Axle (RI).



LIFETIME BASKETBALL EQUIPMENT 5-YEAR LIMITED FACTORY WARRANTY

THE MANUFACTURER RESERVES THE RIGHT TO MAKE SUBSTITUTIONS TO WARRANTY CLAIMS IF PARTS ARE UNAVAILABLE OR OBSOLETE.

1. Lifetime basketball systems are warranted to the original purchaser to be free from defects in material or workmanship for a period of five years from the date of original retail purchase. The word "defects" is defined as imperfections that impair the use of the product. Defects resulting from misuse, abuse or negligence will void this warranty. This warranty does not cover defects due to improper installation, alteration or accident. This warranty does not cover damage caused by vandalism, rusting, "acts of nature" or any other event beyond the control of the manufacturer.
2. This warranty is nontransferable and is expressly limited to the repair or replacement of defective basketball equipment. If the equipment is defective within the terms of this warranty, Lifetime Products, Inc. will repair or replace defective parts at no cost to the purchaser. Shipping charges to and from the factory are not covered and are the responsibility of the purchaser. Labor charges and related expenses for removal, installation or replacement of the basketball system or its components are not covered under this warranty.
3. This warranty does not cover scratching or scuffing of the product that may result from normal usage. In addition, defects resulting from intentional damage, negligence, unreasonable use or hanging from the net or rim will void this warranty.
4. Liability for incidental or consequential damages is excluded to the extent permitted by law. While every attempt is made to embody the highest degree of safety in all equipment, freedom from injury cannot be guaranteed. The user assumes all risk of injury resulting from the use of this product. All merchandise is sold on this condition, and no representative of the company may waive or change this policy.
5. This product is not intended for institutional or commercial use; Lifetime Products, Inc. does not assume any liability for such use. Institutional or commercial use will void the warranty.
6. This warranty is expressly in lieu of all other warranties, expressed or implied, including warranties of merchantability or fitness for use. Neither Lifetime Products, Inc., nor any representative assumes any other liability in connection with this product.



**ALL WARRANTY CLAIMS MUST BE ACCOMPANIED BY A SALES RECEIPT.
REPORT PRODUCT DEFECTS IN WRITING TO:**

Lifetime Products, Inc., PO Box 160010 Clearfield, UT 84016-0010
or call (800) 225-3865 M-F 8 a.m. to 5 p.m. MST.
Please include your dated sales receipt and photographs of damaged parts.

To Register Your Product, Visit Our Website at www.lifetime.com